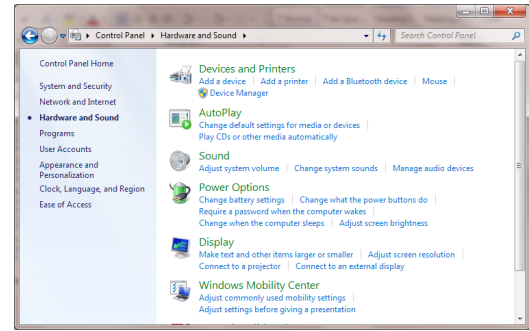


How to Disable USB Power Management in Windows 7 & 8

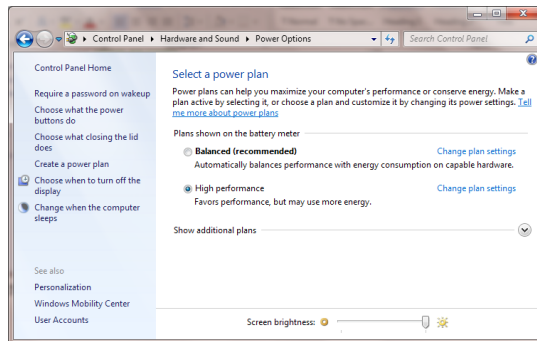
Disabling USB Power Management



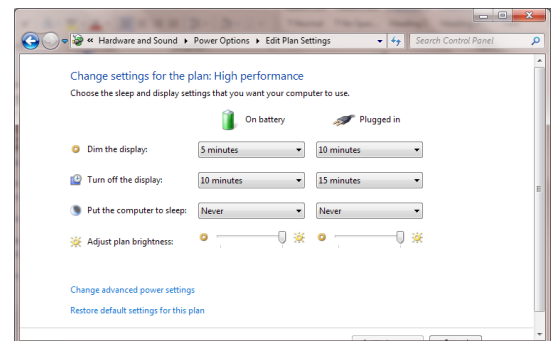
1. Click windows button (lower left hand corner on task bar) and select "Control Panel". Make sure that your Windows Control Panel is displayed in Category view. If it isn't, click on the "View by:" and select "Category".



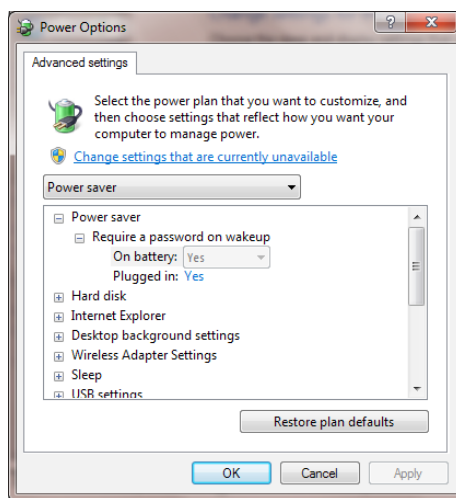
2. Then select "Hardware and Sound"



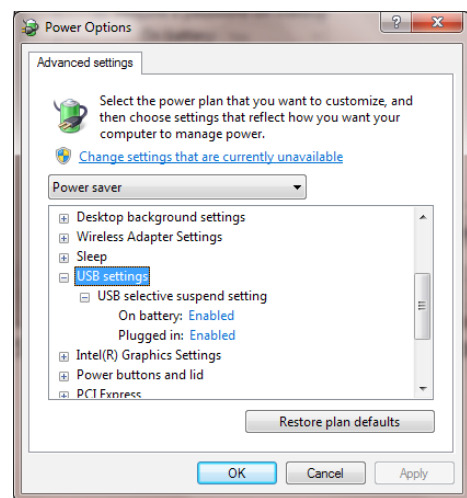
3. Then select "Power Options"



4. Then select "Change Plan Settings"



5. Then select "Change Advanced Power Settings"



6. Scroll down to, "USB settings" and click on the, "+" to expand

7. Make sure both settings under "USB Selected Suspend Setting" are set to "Disabled".