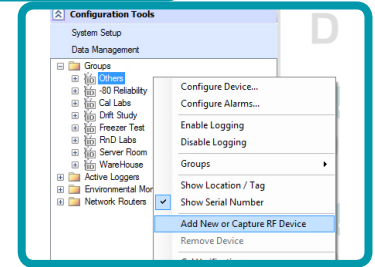
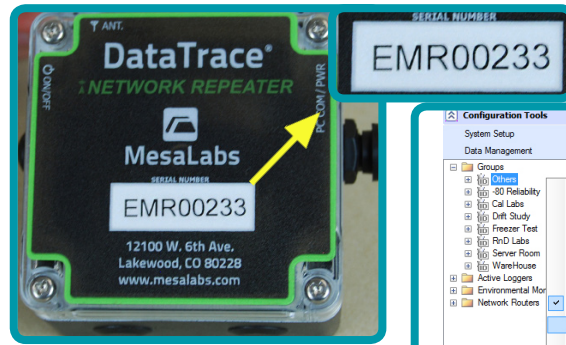
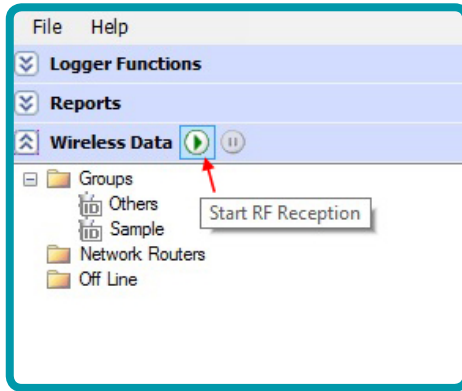


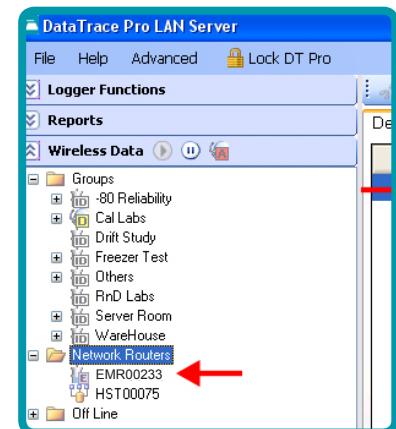
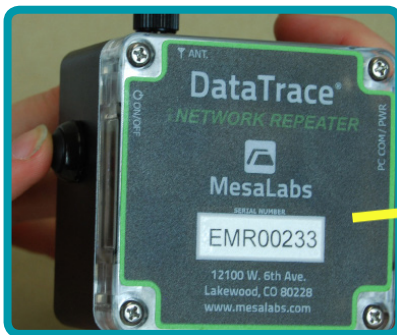
## Quick Start Guide

# Get Started Quickly



**1** Make sure Radio is enabled in DT Pro by clicking the green 'Play' button next to 'Wireless Data'.

**2** Note the serial number of the device and enter it into the capture field in DT Pro by right-clicking in the blank area under 'Configuration Tools' and clicking 'Add New or Capture RF Device'.



**3** Turn the network repeater ON - the internal light should begin flashing.

**4** Your device should now appear in the Radio screen of DT Pro\*.

\*If the device is not captured in DT Pro, refer to the Help file regarding "How to Configure Monitors or Routers".

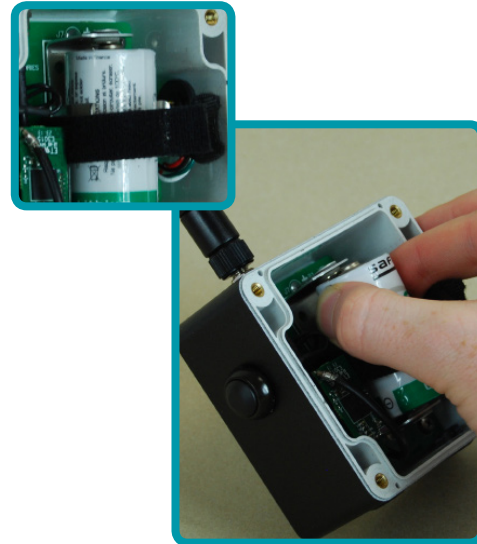
## Changing the Battery

# DataTrace<sup>®</sup>

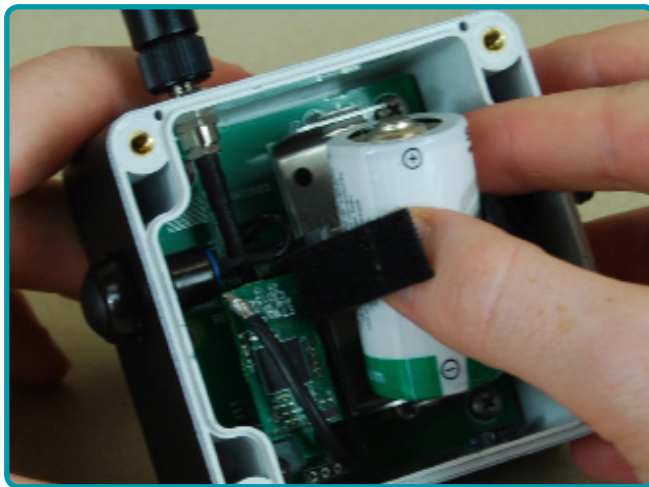
Network Repeater



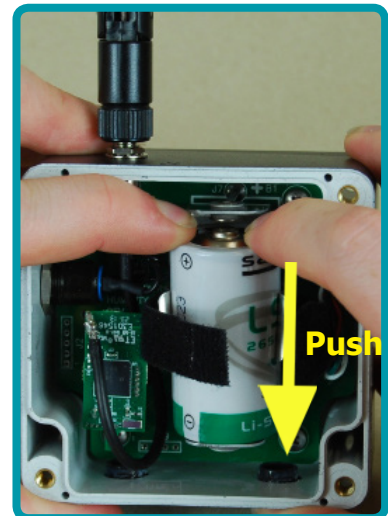
**1** Remove the four Phillips head screws from the front corners of the unit.



**2** Unstrap and carefully pull the battery from its socket.



**3** To place the new battery, align the top and bottom to the socket edges and **push the battery firmly** into place. Make sure polarity matches the diagram.



**4** Replace the front plate and screws in the reverse of removal.